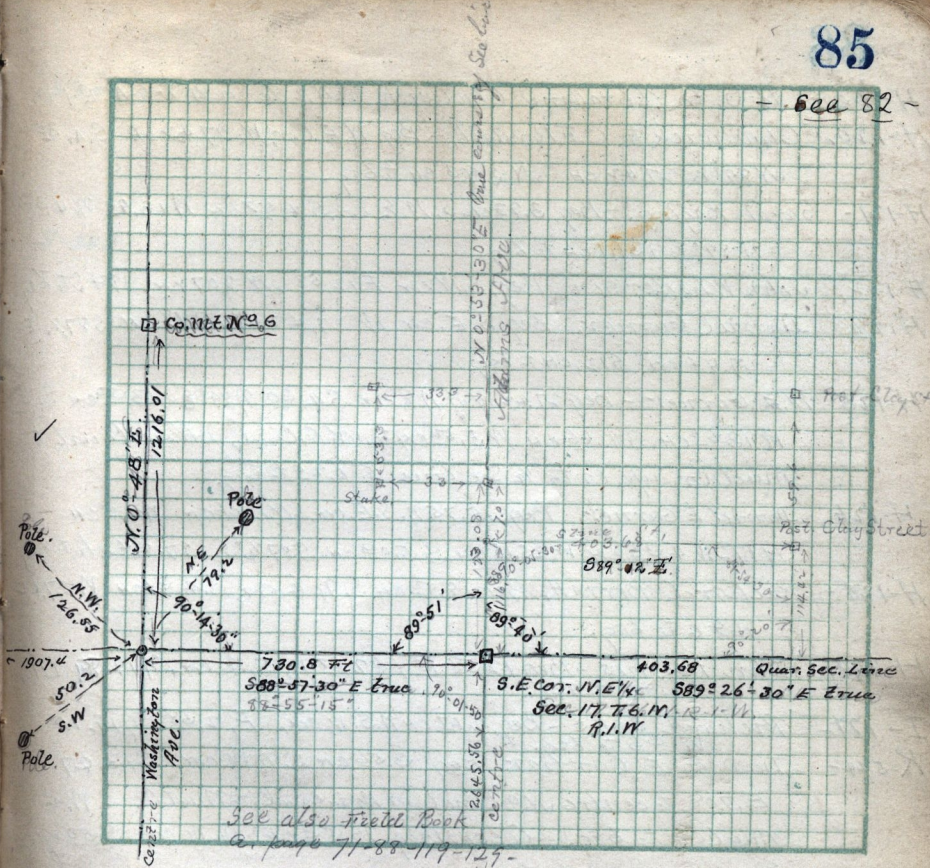


- See 82 -



✓  
Pole.  
N.W. 126.05'  
1907.4  
50.2  
S.W.  
Pole.

See also field Book  
p. 71-88-119-129-

Scale: ..... Chains per inch.

Copy of deed from Thos. Wilson, to Christopher Admerson  
T. 238- P. 1/4 Sec 16 T. 6-N. R. 1-W. Beg. at pt 2.42 ch. N. of  
S. W. cor. Thence N 2.63 ch E, 9.90 ch S 1/4 N 5.04 ch W,  
8.57 ch N 6 1/4 E 2.42 ch thence W. 1.64 ch to beg.  
deed from, Thos Wilson to Jos. Harrop, dated  
Dec 30-1889, - 4-299 - Pt N. W 1/4 Sec. 16 T-6-N-R-1-W.  
Beg. S.W. cor. N. 2.45 ch E. 1.64 ch S 6 1/4 N 2.46 ch  
W 1.38 ch to beg.